

# HAYES®

We've Got Connections™

## POWER TRANSMISSION PRODUCTS



**CK//IPOWER®**  
FAMILY of COMPANIES

**TERRAMAC**

**HAYES®**

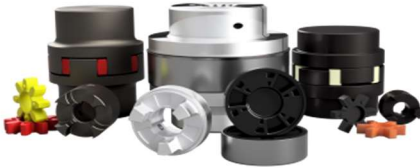
**CK** POWER  
SYSTEMS

**Consolidated**  
Machines & Working  
a division of CKPOWER

**RMPT**  
Rocky Mountain Powertrain  
a division of CKPOWER



- **Hayes "original" Flywheel Coupling** - One-piece design ensures that your coupling will be installed properly the first time, every time.
- **HEX-FLX Flywheel Coupling** - Provides operation below critical speeds. Minimizes spline fretting, best shaft clamping abilities in its class.
- **Flywheel Sizes** - SAE 6-1/2 to SAE 14
- **Housing Sizes** – SAE 6 to SAE 1
- **Non-SAE** – Kubota, Cummins, Deutz, Ford, GM, Others



- **Hayes Flexible Jaw Coupling** – Aluminum and Steel (Spline Lock)
- **L-Series Coupling** – Interchangeable with industry standard
- **Curved Jaw Coupling** – Interchangeable with Industry standard
- **Inserts** - Multiple material options.
- **Pump Motor Adapters** – Cast Aluminum E-Motor or Gas Engine Mounts



- **Bearing Supported Stub Shaft** - Our Bearing Supported Stub Shafts allow you to side-load the back of an engine, while not allowing any load back to the crankshaft.
- **Options** – Our bearing supports are available with grease filled, oil filled or permanently sealed bearings. **Shaft Sizes:** 1-7/16", 1-1/2", 2", 2-1/2"



- **Engine Housings** – Our engine housings are cast and machined in Michigan. These engine housings are designed for your heavy-duty industrial applications.
- **Brackets & Adapters** – We can take your complicated weldment and turn it into a clean casting that will make your equipment stand out. In addition, we cast and machine SAE housing as well as SAE flywheel adapters.
- **Engine Housing Models** – Deutz, Cummins, Kubota, GM, Ford, Others

#### CUSTOM PARTS MACHINING



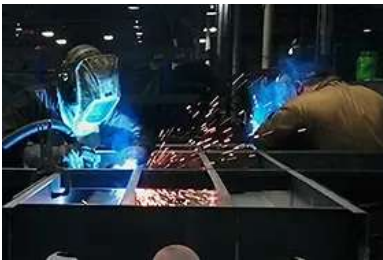
- Pullies
- Splined Shafts
- Adapter Plates
- Flywheels
- Fan Spacers
- \* Stub Shafts
- \* Splined Adapters
- \* Mounting/Adapter Plates
- \* SAE Adapters
- \* And much more...





### Lasers

- Amada LCG 3015 AJ 6000-Watt fiber laser with a AMS3015CL loader
- Amada LCG 3015 AJ 4000-Watt Fiber Laser with a MPL 3015 Loader
- Amada FO MII 4222 NT 4000 Watt with 84" x 165" table
- Amada Ensis 4020AJ 9000-Watt Fiber Laser with a 4020CL Loader
  - **(72" x 144" capacity)**
- **Thickness: 3/4" Carbon, 1/2" Stainless Steel, 3/8" Aluminum**



### Services

- |                           |                                   |
|---------------------------|-----------------------------------|
| • Sheet Metal Fabrication | * Component Fabrication           |
| • Laser Cutting           | * Production Welding              |
| • In-house Powder Coating | * Stamping and Punching           |
| • Tube Bending            | * Contract Manufacturing/Assembly |



### Other Equipment and Processes

- Amada Vipros 358 King Turret Punch
- Amada Coma 567 Turret Punch
- Amada EMK 3610 NT Turret Punch
- Aida 220 Ton Stamping Press
- Minster 90 Ton Stamping Press
- Minster 60 Ton Stamping Press
- Production Mig Welding
- Tig Welding
- Twin Pulse Welding
- FIM Atomic 100 KVA Spot Welder
- Robotic Welder Gen3XC System
- Amada FBD 2004, 220 Ton x 4 meter
- (2) Amada HG1003 ATC Servo-Hydraulic press brake
- Full Assembly Capabilities







## Engines

- Tier 4 & Tier 3 Engines
- Natural Gas Engines
- Marine Engines
- Replacement & Reman Engines

**Kubota**



**JOHN DEERE**



## Generators and Power Units

- Diesel & Natural Gas Power Units
  - Ranges from 12.5 – 750 HP
- Diesel and Natural Gas Generator Sets
  - Ranges from 5 – 4,000 kW



## Parts and Service

- 8 Parts & Service Locations
- Factory Trained & Certified Technicians
- Parts Inventory for Any Make & Model
- 24/7 Parts & Service Emergency Call Center
- 50+ Field Trucks across the US
- Industry Leading Technology & Diagnostic Tooling

## Locations

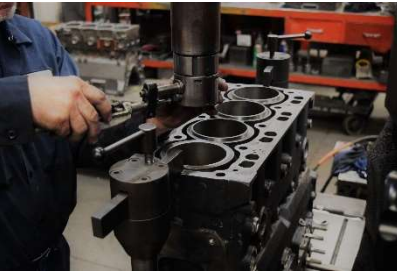
- 1) St. Louis, MO (HQ)
- 2) Hannibal, MO (CM&W)
- 3) Lenexa, KS
- 4) Wichita, KS
- 5) Fife Lake, MI (Hayes)
- 6) Oklahoma City, OK
- 7) Mansfield, TX
- 8) Denver, CO (RMPT)
- 9) Sugar Grove, IL (Terramac)





#### Authorized Service Center

- John Deere
- Yanmar
- Perkins
- Palmer Johnson
- \* Manitou Group
- \* Twin Disc
- \* Volvo Penta
- \* HATZ



#### Engine Machine Shop Services

- Engine Blocks
- Crankshafts
- Connecting Rods
- Cylinder Heads



#### Fuel Shop Services

- Pump Repair
- Diesel fuel injection repair
- Turbo rebuilding

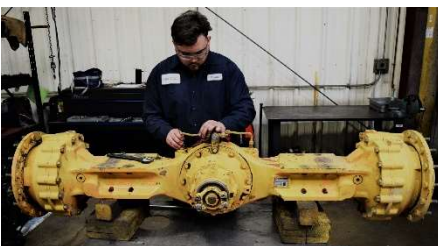
#### Process

Diagnose \* Tear Down \* Quote \* Rebuild \* Test



#### Equipment Refurbishment

- Construction Equipment
- Boom Lifts
- Material Handlers
- Compaction Equipment
- Aerial Lifts
- \* Telehandlers
- \* Generators
- \* De-Watering Pump
- \* Agricultural Equipment
- \* Much More...



#### Powertrain Component Services

- **Transmissions** – Rebuilds (ZF, Carraro, Twin Disc, CAT, and many others.
- **Axles** - We work on everything from blown seals to failed parking brakes to overfilling issues. We tear down each axle, closely inspecting each component, we source all parts through our expansive network of OEM's and vendors.
- **Power Take Off's** - We have experience with many PTO brands and are an authorized service center for Twin Disc and Transfluid.



## About Terramac

Terramac is a prominent crawler carrier manufacturing company owned by [CK Power](#), a leading manufacturer, distributor, and service provider of power generation, powertrain, and off-highway power solutions.

Founded in 2011, Terramac set out to achieve this mission through product innovation, performance, and customer satisfaction. Our product line-up consists of multiple straight frame models in various sizes as well as 360° rotating models that deliver precise and flexible dumping capabilities at any angle or on the go.



### Straight Frame

- RT6
- RT9
- RT14

### Rotating

- \* RT7R
- \* RT14R

### Purpose Built

- \* RT7U
- \* RT9U
- \* RT14U

### Straight Frame



### Rotating



### Purpose Build



### Machines in Action



### Dealer Network

We offer a full-line dealer network covering the United States and Canada that provides localized sales, rentals, and aftermarket parts and service to our customers which truly sets us apart from the competition. As your needs change, we remain flexible in seeking ways to provide the equipment solution you need to keep your focus on the job at hand.